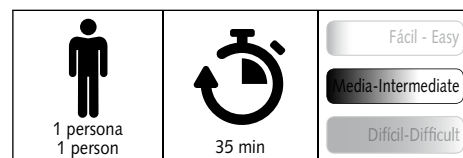
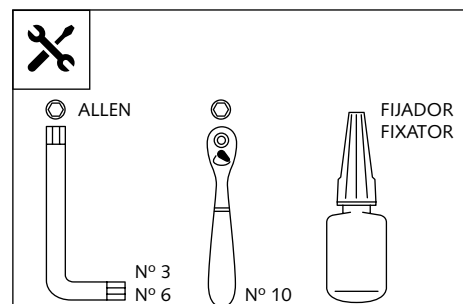


PARAMANOS PARA - HANDPROTECTORS FOR - HANDCHUTZPROTEKTOREN FÜR KAWASAKI VERSYS 650 '15-'20/ VERSYS 1000 '15-



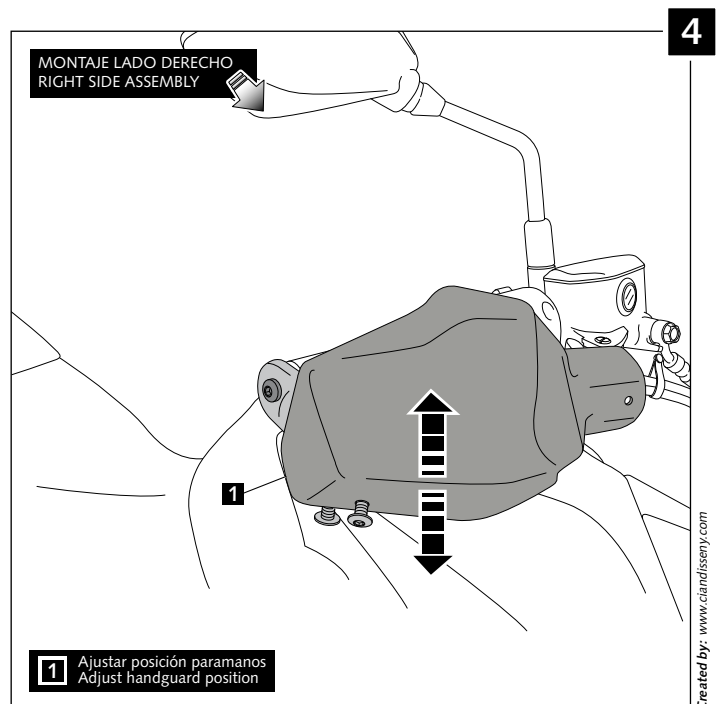
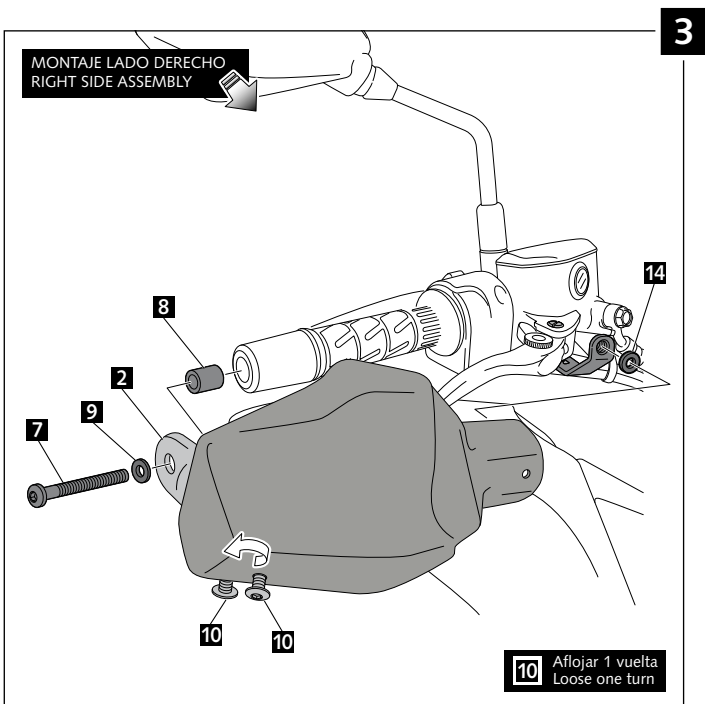
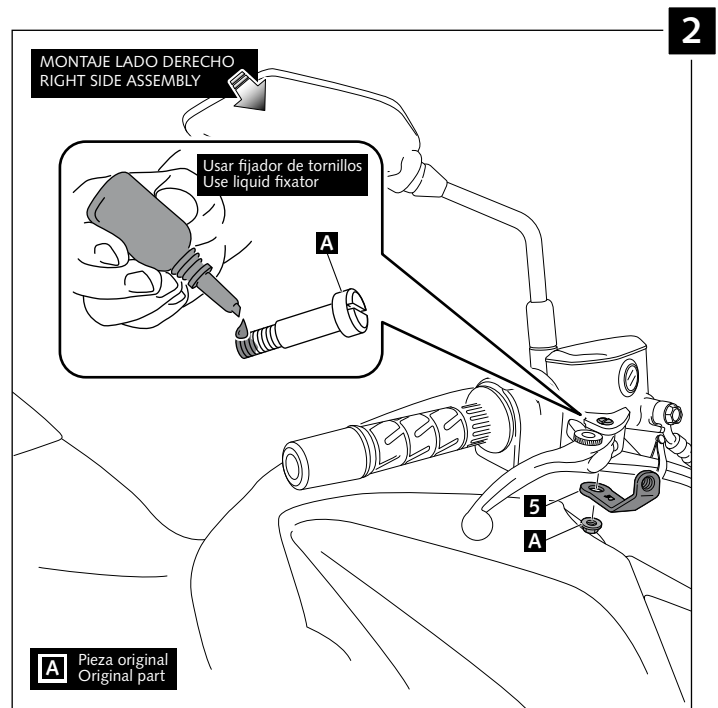
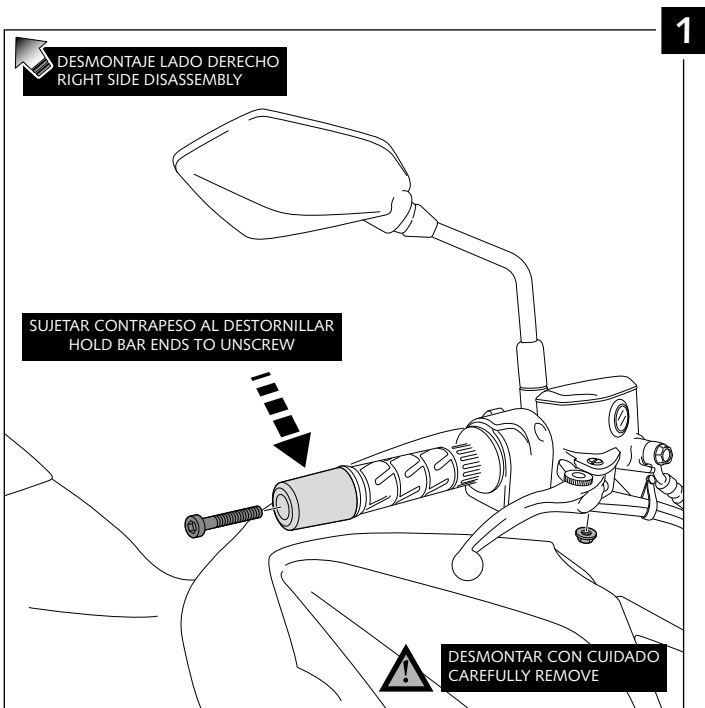
Ref.: 8951



ID.	PIEZA / PART	DESCRIPCIÓN	DESCRIPTION	QTY.
1		Paramanos derecho	Right handguard	1
2		Pieza derecha anclaje manillar Ø8.2 (se suministra montada)	Ø8.2 right handlebar anchoring part (supplied mounted with handguard)	1
3		Paramanos izquierdo	Left handguard	1
4		Pieza izquierda anclaje manillar Ø8.2 (se suministra montada)	Ø8.2 left handlebar anchoring part (supplied mounted with handguard)	1
5		Soporte metálico derecho (R)	Right metal support (R)	1
6		Soporte metálico izquierdo (L)	Left metal support (L)	1
7		Tornillo Allen M8x60 ISO 7380	M8x60 ISO 7380 Allen screw	2
8		Casquillo Øext. 14x Øint. 8,5x22mm	Øouter 14x Øinner 8,5x22mm Arrowhead	2
9		Arandela metálica M8 DIN125	M8 DIN125 metalic washer	2
10		Tornillo Allen M5x11 Ø11 ISO 7380 (se suministra montada con las piezas 1-2-3-4)	M5x11 Ø11 ISO 7380 Allen screw (supplied already mounted with 1-2-3-4)	4
11		Tornillo Allen M5x16 Ø11 ISO 7380	M5x16 Ø11 ISO 7380 Allen screw	2
12		Arandela de Nylon M5x1 (se suministra montada con las piezas 1-2-3-4)	M5x1 Nylon washer (supplied already mounted with 1-2-3-4)	6
13		Arandela de goma Øint. 4,5 x Øext. 11x2mm (se suministra montada con las piezas 1-2-3-4)	Øinner 4,5 x Øouter 11x2mm Rubber washer (supplied already mounted with 1-2-3-4)	4
14		Arandela de goma Øint. 4,5 x Øext. 14x4mm	Øinner 4,5 x Øouter 14x4mm Rubber washer	2
15		Tuerca grafilada M5 (se suministra montada con las piezas 1-2-3-4)	M5 Special nut (supplied already mounted with 1-2-3-4)	4
16		Tapón tornillo M5 ISO 7380	M5 ISO 7380 Allen screw cap	6
17		Kit adhesivos	Stickers set	1

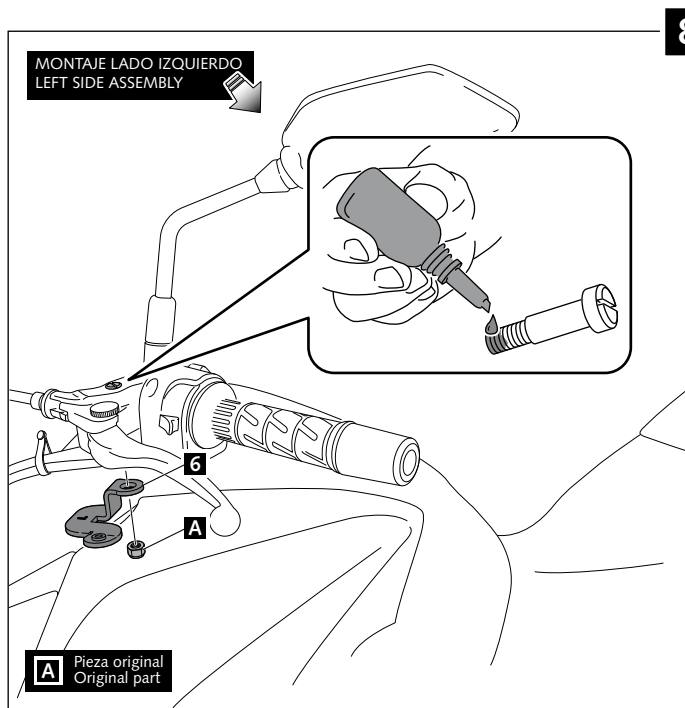
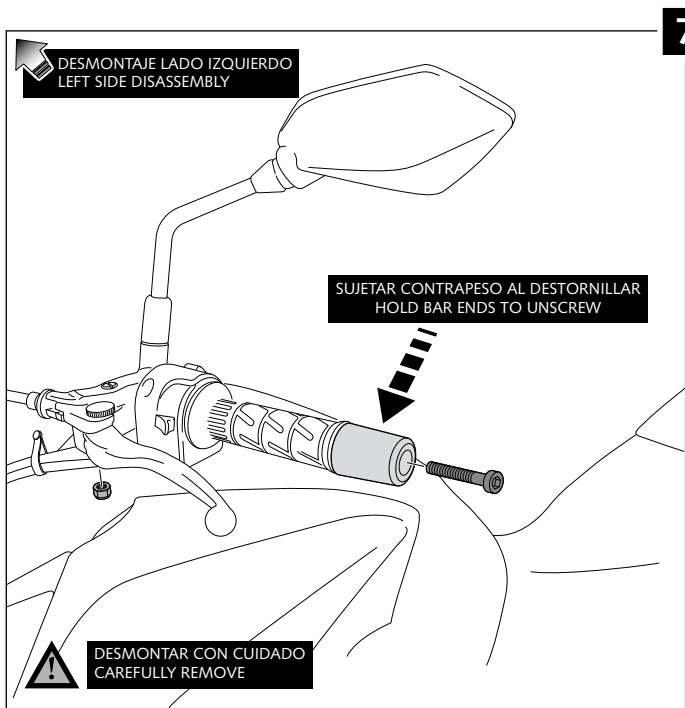
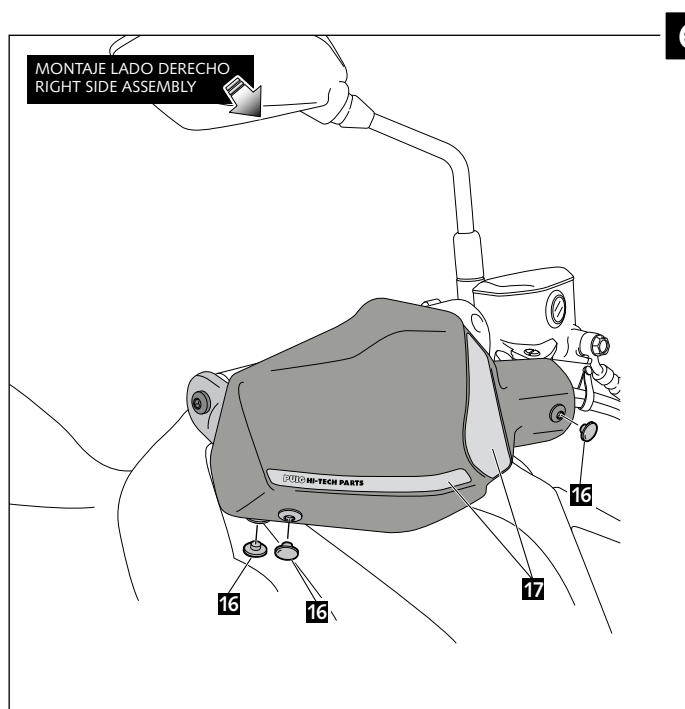
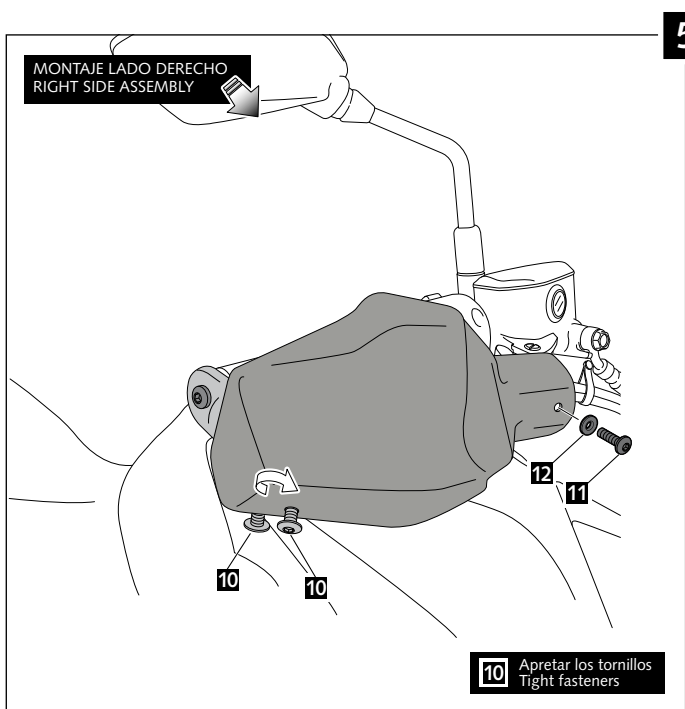
PARAMANOS PARA - HANDPROTECTORS FOR - HANDSCHUTZPROTEKTOREN FÜR
KAWASAKI
VERSYS 650 '15-'20/ VERSYS 1000 '15-

INSTRUCCIONES DE MONTAJE - MOUNTING INSTRUCTIONS - MONTAGEANLEITUNG



PARAMANOS PARA - HANDPROTECTORS FOR - HANDSCHUTZPROTEKTOREN FÜR
KAWASAKI
VERSYS 650 '15-'20/ VERSYS 1000 '15-

INSTRUCCIONES DE MONTAJE - MOUNTING INSTRUCTIONS - MONTAGEANLEITUNG



PARAMANOS PARA - HANDPROTECTORS FOR - HANDSCHUTZPROTEKTOREN FÜR
KAWASAKI
VERSYS 650 '15-'20/ VERSYS 1000 '15-

INSTRUCCIONES DE MONTAJE - MOUNTING INSTRUCTIONS - MONTAGEANLEITUNG

